

46-50 MEREDITH STREET BANKSTOWN NSW 2200

DRAWING LIST

HYDRAULIC SERVICES		
SHEET	TITLE	SCALE
H000	DRAWING SCHEDULE & LEGEND	AS SHOWN
H101	BASEMENT 2 FLOOR PLAN DRAINAGE SERVICES	1:100
H102	BASEMENT 1 FLOOR PLAN DRAINAGE SERVICES	1:100
H103	GROUND FLOOR PLAN DRAINAGE SERVICES	1:100

NOTES:

- ALL WORKS TO BE INSTALLED IN ACCORDANCE WITH LOCAL COUNCIL REQUIREMENTS, AS3500 NATIONAL PLUMBING & DRAINAGE CODE.
- THE CONTRACTOR IS TO CONFIRM LOCATION & DEPTH OF EXISTING SERVICES ON SITE PRIOR TO CONSTRUCTION. IF ANY CONFLICT EXISTS NOTIFY BUILDER IMMEDIATELY.
- THE CONTRACTOR IS TO CONFIRM EXISTING & PROPOSED SURFACE LEVELS PRIOR TO INSTALLATION OF PIPEWORK, SUMPS, MANHOLES, PITS, ETC.
- BACKFILLING
BACKFILL SERVICE TRENCHES AS SOON AS POSSIBLE AFTER SERVICE HAS BEEN LAID AND BEDDED. PLACE THE BACKFILL IN LAYERS <150mm THICK AND COMPACT TO THE DENSITY WHICH APPLIES TO THE LOCATION OF THE TRENCHES TO MINIMISE SETTLEMENT.
- BACKFILL MATERIAL
GENERAL FILL WITH NO STONES GREATER THAN 25mm OCCURRING WITHIN 150mm OF THE SERVICE UNDER ROADS AND PAVED AREAS AND WITHIN 4 METRES OF BUILDING: COARSE SAND, CONTROLLED LOW STRENGTH MATERIAL OR FINE CRUSHED ROCK.
- ON COMPLETION OF PIPE INSTALLATION, ALL DISTURBED AREAS MUST BE RESTORED TO ORIGINAL CONDITION INCLUDING: KERBS, FOOTPATHS, CONCRETE AREAS, GRAVEL AREAS & ROAD PAVEMENTS.
- CARE SHALL BE TAKEN WHEN EXCAVATING NEAR EXISTING SERVICES. EXCAVATE BY HAND IN THESE AREAS.
- THE PLUMBING CONTRACTOR SHALL OBTAIN ALL AUTHORITY APPROVALS AND PAY ALL FEES.
- INVERT LEVELS SHOWN ARE INDICATIVE ONLY. CONFIRM ALL LEVELS ON SITE BEFORE COMMENCING CONSTRUCTION.

LEGEND

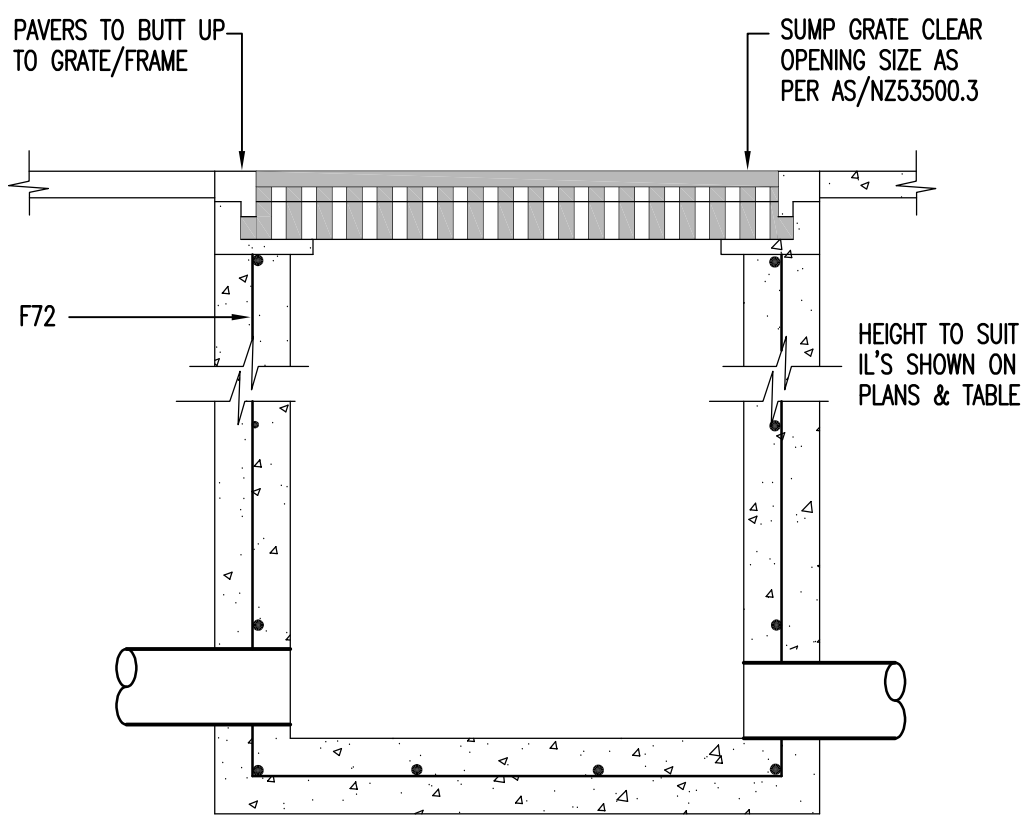
—xsw—	EX. STORMWATER DRAINAGE
—sw—	STORMWATER DRAINAGE (SW)
—rw—	RAINWATER DRAINAGE (RW)
—rm—	RISING MAIN (RM)
—/—/—	AGRICULTURAL DRAIN (AG)
—○—	THROUGH DROPPER / RISER
—→—	BEND DOWN
—○—	TEE UP
—○—	TEE DOWN
	SUMP
→→→	OVERLAND FLOW PATH
→	REDUCER
◆	RISER
◆	SERVICE NAME
◆	SIZE
◆	DROPPER
→	FLOW DIRECTION

ABBREVIATIONS

CO	CLEAR OUT
DP	DOWNPIPE
ED	ELEVATED DRAINAGE
EX	EXISTING
IL	INVERT LEVEL
LO	INSPECTION OPENING
IS	INSPECTION SHAFT
PVC	POLYVINYL CHLORIDE
RL	RELATIVE LEVEL
EJ	EXPANSION JOINT

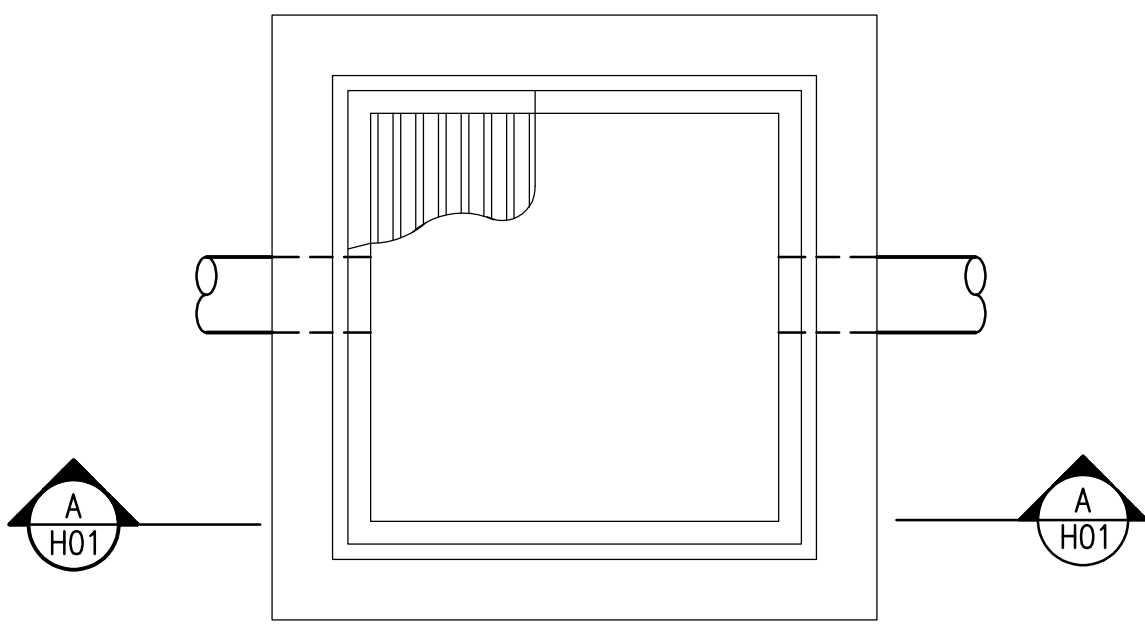
MINIMUM INTERNAL DIMENSIONS FOR
STORMWATER AND INLET PITS

DEPTH TO INVERT OF OUTLET	MINIMUM INTERNAL DIMENSIONS mm		
	RECTANGULAR		CIRCULAR
	WIDTH	DEPTH	DIAMETER
≤600	450	450	600
>600	≤900	600	900
>900	<1200	600	1000
>1200		900	1000

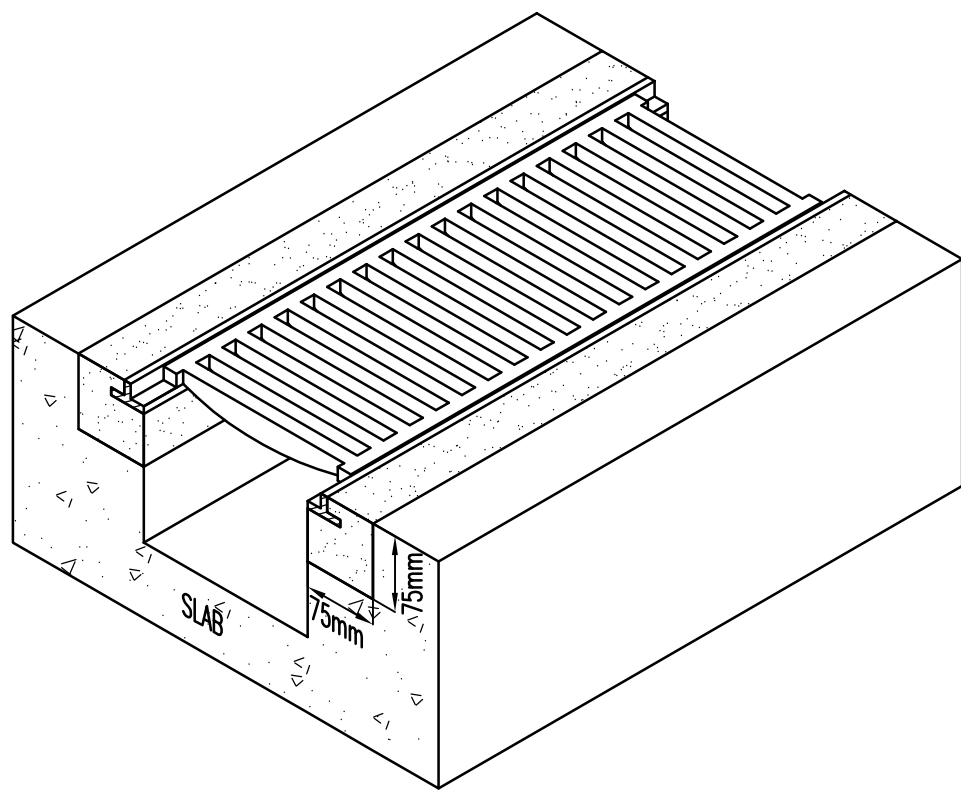


SECTION A-A

STORMWATER SUMP DETAIL
SCALE N.T.S.



PLAN



TRENCH GRATE WITH FRAME
SCALE N.T.S.

DEVELOPMENT APPLICATION / CONCEPT DESIGN DOCUMENTATION

THIS DRAWING REPRESENTS A "CONCEPT DESIGN" ONLY OF THE PROPOSED STORMWATER DRAINAGE FOR THIS PROJECT. IT IS NOT A CONSTRUCTION DRAWING. IT REMAINS THE RESPONSIBILITY OF THE CONTRACTOR TO UNDERTAKE DETAILED DESIGN PRIOR TO CONSTRUCTION. ENSURE DESIGN COMPLIES WITH ALL APPLICABLE CODES AND STANDARDS.

A	ISSUE FOR DA APPROVAL	21.11.19	JD	GH
ISSUE	REVISION	DATE	REVIEW	APPROVED

WEBB
AUSTRALIA

CONSULTING ELECTRICAL ENGINEERS LIGHTING CONSULTANTS TECHNOLOGY CONSULTANTS
HYDRAULIC CONSULTANTS
WEBB AUSTRALIA GROUP (NSW) PTY LIMITED ABN 48 650 056 712
STONEY OFFICE LEVEL 4, 8/28 PACE STREET, BANKSTOWN NSW 2202 AUSTRALIA
TELEPHONE 02 9419 1444 EMAIL ghag@webbaustralia.com.au

PROJECT

46-50 MEREDITH STREET
BANKSTOWN NSW 2200

DRAWING

DRAWING SCHEDULE & LEGEND

DATE	SCALE	DRAWN	CHECKED
JUNE 2017	1:100	GH/JD	GH
PROJECT	DWG NO	REVISION	NO IN SET
173010	H000	A	1

STATUS

DA ISSUE

COPYRIGHT WEBB AUSTRALIA GROUP (NSW) PTY LTD ABN 48 650 056 712. ALL RIGHTS RESERVED. THIS DRAWING MAY NOT BE REPRODUCED OR TRANSMITTED IN ANY FORM OR BY ANY MEANS, ELECTRONIC OR MECHANICAL, WITHOUT THE WRITTEN PERMISSION OF WEBB AUSTRALIA GROUP (NSW) PTY LTD. WEBB AUSTRALIA GROUP (NSW) PTY LTD. SHALL BE RESPONSIBLE FOR THE DESIGN AND SHALL BE HELD IN CONJUNCTION WITH ALL CONTRACT DOCUMENTS. SHOULD ANY AMBIGUITY, ERROR, OMISSION, INCONSISTENCY, INCOMPLETENESS OR OTHER FAULT APPEAR TO EXIST IN THE DOCUMENTS, THE CONTRACTOR SHALL BE RESPONSIBLE FOR THE CONTRACT ADMINISTRATION WORKING.